

Efergy

Measuring
and
Verification



ELLIES E

RENEWABLE ENERGY

Elite Classic Wireless Energy Monitor

ELITE CLASSIC
WIRELESS ENERGY MONITOR

Product Code: FSEME
Barcode: 600284406 0466

efergy®



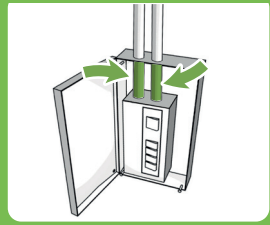
- Instantly see the cost of using energy in your home
- View your daily, weekly, monthly or average data
- Tariff rates pre-programmed (or updated manually)
- Discover and reduce your carbon footprint

The Energy monitor unit and how it works

The elite classic energy monitor is simple to install and easy to use. The monitor receives the data wirelessly via the transmitter and displays the demand in kilowatts of energy being consumed at any given time. The elite classic may be programmed for various rates, ensuring that the cost of your energy is accurate.

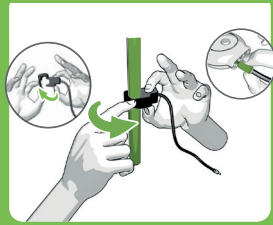
1.

LOCATE YOUR LIVE FEED WIRE



2.

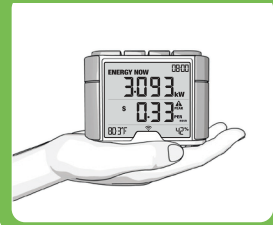
ATTACH THE SENSOR



LINK THE TRANSMITTER



MONITOR, REDUCE, SAVE



THE KIT CONTAINS



- 1 x Elite Wireless Display
- 1 x Transmitter
- 1 x Mini CT Sensor
- 6 x AA Batteries

www.ellies.co.za

Brought to you by **ELLIES**

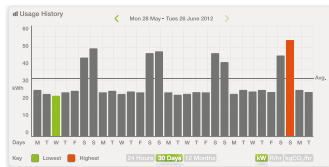
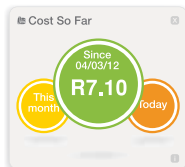
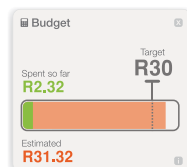
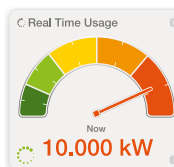




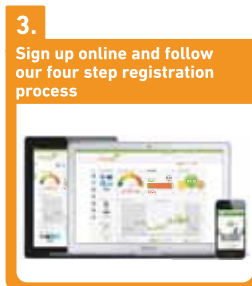
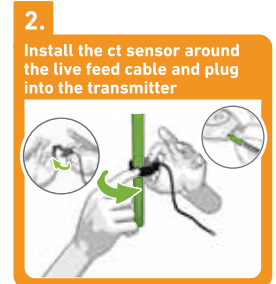
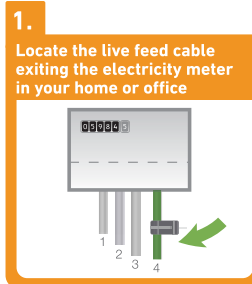
To help do our bit for the environment we have included a quick-start guide to help you install your product. If you want the full manual you can download it online from the efergy website.

Engage Hub Dashboard - Online Features

Access to instant energy information is key to successful home energy management, after all you can't save what you can't see! Install the engage hub and get free access to a range of handy energy monitoring tools via our online dashboard.



Engage Hub Kit - Installation Process



Sign up online at:
engage.efergy.com

THE KIT CONTAINS



- 1 x Engage Hub
- 1 x Transmitter
- 1 x Mini CT Sensor
- 1 x Ethernet Cable
- 1 x AC/DC Adaptor



eLink software is compatible with Windows and Mac.

www.elliesrenewable.co.za

Brought to you by **ELLIES E**



RENEWABLE ENERGY

Additional Sensors (x2) to fit the Elite and E2 Wireless Energy Monitors

Product Code: FSEMMS2
Barcode: 6002844000660



- Wireless Energy Monitor Additional Sensor excluding software.

Additional Sensors (x2) to fit the Elite and E2 Wireless Energy Monitors

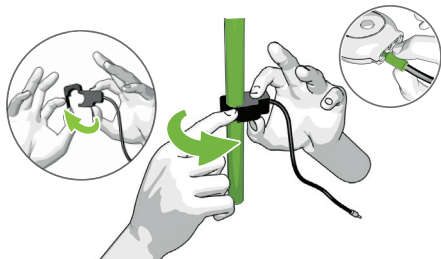
Replacement sensor or upgrade your Ellies/Efergy monitor to three phase by purchasing two additional sensors. Suitable for cable diameters up to 13mm.

Diagram

Attach the sensor

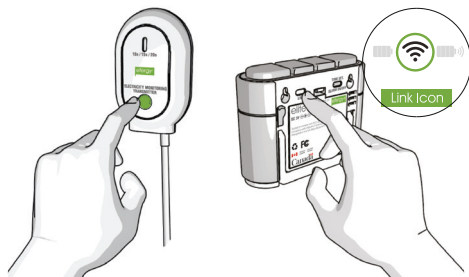
Pull the clasp to open the CT sensor. Place the sensor around the feed cable and push the clasp to shut. Insert the sensor jack into the base of the transmitter.

IMPORTANT - The CT sensor must be clamped around the LIVE wire only and not around a cable containing the live, neutral and earth wires.



Link transmitter and display

Push the link button located on the back of the display unit. The link icon on the screen will flash. Press the button on the transmitter to complete synchronization. If the link is completed you will see the link icon is back on the screen.



TECHNICAL INFORMATION

Specifications:

Max. current:	90 Amp
Max. permitted cable diameter:	13mm
Max. voltage:	600V
Measuring CAT II	



If you are concerned about installation please contact an electrician, ensure cables are not damaged. Do not cut cables.

THE PACKAGE CONTAINS



2 x Sensor units

PACKAGING DIMENSIONS

	Weight (kg)	Height (mm)	Width (mm)	Depth (mm)
Package	0,02	3,7	10,9	24,3

Large Sensor to fit all Ellies/Efergy Wireless Energy Monitors

Product Code: FSEMMLS
Barcode: 6002844058463



- Wireless Energy Monitor Additional Sensor excluding software.

Large Sensor to fit all Ellies/Efergy Wireless Energy Monitors

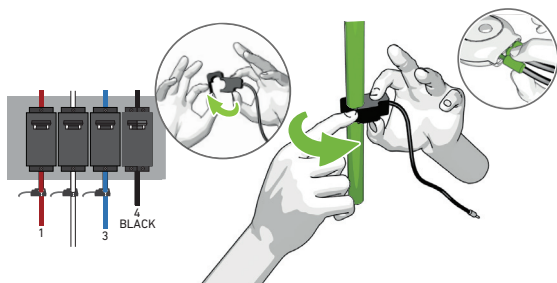
Replacement sensor or upgrade your Ellies/Efergy monitor to allow connection to larger diameter cables up to 19mm.

Diagram

Attach the sensor

Pull the clasp to open the CT sensor. Place the sensor around the feed cable and push the clasp to shut. Insert the sensor jack into the base of the transmitter.

IMPORTANT - The CT sensor must be clamped around the LIVE wire only and not around a cable containing the live, neutral and earth wires.



Link transmitter and display

Push the link button located on the back of the display unit. The link icon on the screen will flash. Press the button on the transmitter to complete synchronization. If the link is completed, you will see that the link icon is back on the screen.



Note: Monitors total power consumption of all three phases together.

TECHNICAL INFORMATION

Specifications:

Max. current:	140 Amp
Max. permitted cable diameter:	19 mm
Max. voltage:	600V
Measuring CAT II	

Caution: Turn off power before installing these devices. If you are concerned about installation please contact an electrician, ensure cables are not damaged. Do not cut cables.

THE PACKAGE CONTAINS

1 x Sensor unit

PACKAGING DIMENSIONS

	Weight (kg)	Height (mm)	Width (mm)	Depth (mm)
Package	0,02	3,7	10,9	24,3



www.ellies.co.za



Brought to you by **ELLIES**

Additional Large Sensors (x2) to fit the Elite and E2 Energy Monitors

Product Code: FSEMMLS2
Barcode:6002844000677



- Wireless Energy Monitor Additional Sensor excluding software.

Additional Large Sensors (x2) to fit the Elite and E2 Energy Monitors

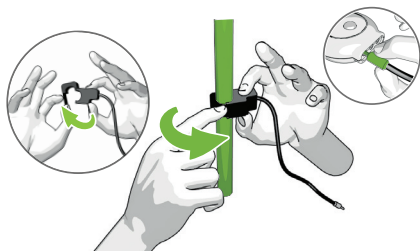
Replacement sensor or upgrade your Ellies/Efergy monitor to three phase by purchasing two additional sensors.

Diagram

Attach the sensor

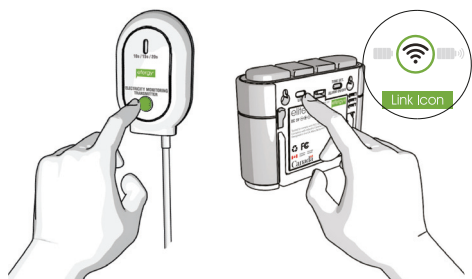
Pull the clasp to open the CT sensor. Place the sensor around the feed cable and push the clasp to shut. Insert the sensor jack into the base of the transmitter.

IMPORTANT - The CT sensor must be clamped around the LIVE wire only and not around a cable containing the live, neutral and earth wires.



Link transmitter and display

Push the link button located on the back of the display unit. The link icon on the screen will flash. Press the button on the transmitter to complete synchronization. If the link is completed you will see the link icon is back on the screen.



TECHNICAL INFORMATION

Specifications:

Max. current:	140 Amp
Max. permitted cable diameter:	19 mm
Max. voltage:	600V
Measuring CAT II	



If you are concerned about installation please contact an electrician, ensure cables are not damaged. Do not cut cables.

THE PACKAGE CONTAINS



2 x Sensor unit

PACKAGE DIMENSIONS



Height (mm)	Depth (mm)	Width (mm)	Weight (kg)
3.7	24.3	10.9	0.02



www.ellies.co.za



Brought to you by **ELLIES E**

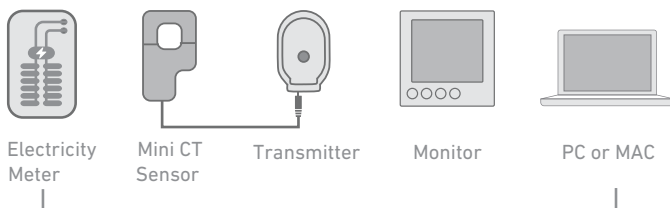


**SAVE UP TO 20% OFF
YOUR ENERGY BILL***

- Download your energy data to elink
- Instantly see the cost of using energy in your home
- Mains powered with battery back up for portability
- View your daily, weekly, monthly or average data
- Uses multiple tariff options
- Discover and reduce your carbon footprint
- Learn about energy with your family
- Tariff rates pre-programmed (or updated manually)

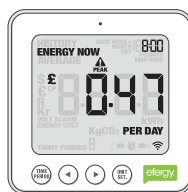
ENERGY MONITORS - HOW THEY WORK

Our e2 Classic Energy Monitor is simple to install and easy to use. A mini current sensor is clipped on to the supply cables. A lead from the sensor is plugged into the energy transmitter, which then wirelessly sends real time data to the energy monitor. The monitor receives the data and displays the demand in kilowatts of energy being consumed at any given time. The e2 OPT may be programmed for various rates, ensuring that the cost of your energy is accurate.



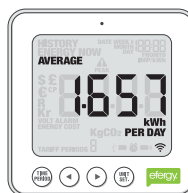
INSTANT SAVINGS

The e2 classic updates every 6, 12 or 18 seconds. The display then shows how much energy is consumed at that moment and how much it will cost if the 'energy now' load is maintained for a period of one day.



AVERAGE DATA

The e2 classic displays your average energy usage per day, week and month. See the impact of your energy efficient efforts, and then watch your average energy usage reduce.



DOWNLOAD YOUR DATA

Download your energy consumption data to your PC or Mac and analyse it with our efergy elink 2.0 software. View informative graphs, print or save reports as PDF files. Data may also be viewed using Excel.



MEMORY FUNCTION

The e2 classic memory function allows you to view your energy usage by the day, week or month. The e2 classic helps you understand your energy usage and how it changes over time.



TECHNICAL INFORMATION

Model Name	e2 IR
Model Number	E2-UK
Frequency	433.5MHz
Transmission Time	6, 12 or 18 Sec
Transmission Range	40 - 70m
Sensor Voltage Range	110 - 600V
Measuring Current	50mA - 90A
Accuracy	> 90%

The backlight will be activated from 18:00 to 6:00 hours

THE KIT CONTAINS

1 x e2 Wireless Energy Monitor	Batteries Supplied
1 x Transmitter	1 x USB cable
1 x Mini CT Sensor	elink 2.0 software download from efergy.com

3 Phase Wireless Energy Monitor

efergy

E2 CLASSIC
3 PHASE WIRELESS ENERGY MONITOR

Product Code: FSEM2T
Barcode: 600284400 0301



**Perfect For 3
Phase Systems**
3 Sensors Included

- Download your energy data to elink
- Instantly see the cost of using energy in your home
- Mains powered with battery back up for portability
- View your daily, weekly monthly or average data
- Uses multiple tariff options
- Discover and reduce your carbon footprint
- Learn about energy with your family
- Tariff rates pre-programmed (or updated manually)

ENERGY MONITORS - HOW THEY WORK

Our **E2 Classic** energy monitor is simple to install and easy to use. 3 mini current sensors are clipped to the incoming supply cables (3 phases).

Leads from the sensors are plugged into the transmitter. The display shows the combined 3 phase power consumption. The monitor receives the data and displays the demand in kilowatts of energy being consumed at any given time. The **E2 Classic** may be programmed for various rates, ensuring that the cost of your energy is accurate. The **E2 Classic** works in conjunction with your energy management software **elink**, which allows you to look at in-depth energy information on your computer.

THE KIT CONTAINS



- 1 x e2 Wireless Display
- 1 x Transmitter
- 3 x mini CT Sensors (fits 90A, 13mm cable)
- 1 x elink Software Setup
- 1 x USB Cable
- 3 x AA Batteries
- 3 x AAA Batteries

DOWNLOAD YOUR DATA

Download your energy consumption data to your PC or Mac and analyse it with our efergy elink 2.0 software. View informative graphs, print or save reports as PDF files. Data may also be viewed using Excel.

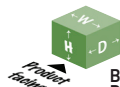


MEMORY FUNCTION

The e2 classic memory function allows you to view your energy usage by the day, week or month. The e2 classic helps you understand your energy usage and how it changes over time.



PACKAGE DIMENSIONS



Blister Pack
Dimensions

Height (mm)	Depth (mm)	Width (mm)	Weight (kg)
220	55	205	0.74



elink software is compatible
with Windows and Mac.

www.elliesrenewable.co.za

Brought to you by **ELLIES E**

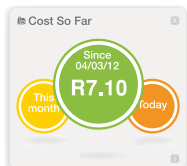
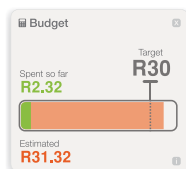
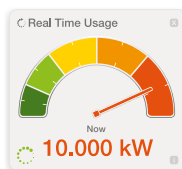
ELLIES E
RENEWABLE ENERGY



To help do our bit for the environment we have included a quick-start guide to help you install your product. If you want the full manual you can download it online from the [efergy website](http://efergy.com).

Engage Hub Dashboard - Online Features

Access to instant energy information is key to successful home energy management, after all you can't save what you can't see! Install the engage hub and get free access to a range of handy energy monitoring tools via our online dashboard.

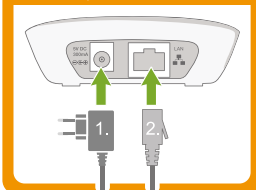


Engage Hub Solo - Installation Process

- Compatible with Elite and E2 Classic, IR, Optical and TPM kits



- Connect the ethernet cable to the hub. Power the hub with the AC/DC adaptor



- Sign up online and follow our four step registration process



- The transmitter wirelessly sends your electricity consumption every 6 seconds



Sign up online at:
engage.efergy.com

THE KIT CONTAINS



- 1 x Engage Hub
- 1 x Ethernet Cable
- 1 x AC/DC Adaptor



eLink software is compatible with Windows and Mac.

www.elliesrenewable.co.za

Brought to you by **ELLIES**



RENEWABLE ENERGY

Sensor to fit all Ellies/Efergy Wireless Energy Monitors

Product Code: FSEMMS
Barcode: 600284405 8456

Wireless Energy Monitor Additional Sensor excluding software.



 Fits all Ellies Efergy wireless monitors

Sensor to fit all Ellies/Efergy Wireless Energy Monitors

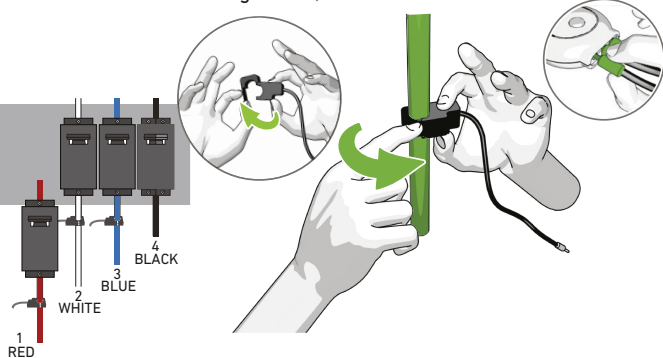
Replacement sensor or upgrade your Ellies/Efergy monitor to three phase by purchasing an additional sensor.

Diagram

Attach the sensor

Pull the clasp to open the CT sensor. Place the sensor around the feed cable and push the clasp to shut. Insert the sensor jack into the base of the transmitter.

IMPORTANT - The CT sensor must be clamped around the LIVE wire only and not around a cable containing the live, neutral and earth wires.



Link transmitter and display

Push the **link** button located on the back of the display unit. The **link** icon on the screen will flash. Press the button on the transmitter to complete synchronization. If the **link** is completed, you will see that the **link** icon is back on the screen.

How to monitor three phase

Purchase two additional large sensors. Fit the additional sensor jacks to the transmitter unit (fits all Ellies/Efergy transmitter units). Fit the additional sensor clamps to incoming power cables.



Note: Monitors total power consumption of all three phases together.

TECHNICAL INFORMATION

Specifications:

Max. current:	90 Amp
Max. permitted cable diameter:	13 mm
Max. voltage:	600V
Measuring CAT II	



Caution: Turn off power before installing these devices. If you are concerned about installation please contact an electrician, ensure cables are not damaged. Do not cut cables.

THE PACKAGE CONTAINS



1 x Sensor unit

PACKAGING DIMENSIONS

	Weight (kg)	Height (mm)	Width (mm)	Depth (mm)
Package	0.073	200	82	36



www.ellies.co.za



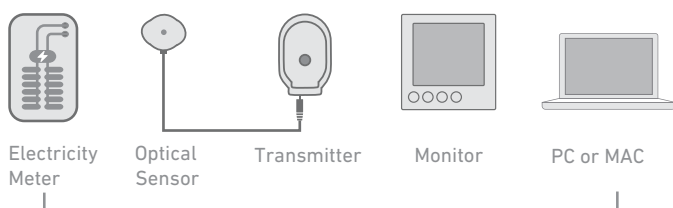
Brought to you by **ELLIES**



- Download your energy data to elink
- Instantly see the cost of using energy in your home
- Mains powered with battery back up for portability
- View your daily, weekly, monthly or average data
- Uses multiple tariff options
- Discover and reduce your carbon footprint
- Learn about energy with your family
- Tariff rates pre-programmed (or updated manually)

ENERGY MONITORS - HOW THEY WORK

Our e2 Classic Energy Monitor is simple to install and easy to use. A mini current sensor is clipped on to the supply cables. A lead from the sensor is plugged into the energy transmitter, which then wirelessly sends real time data to the energy monitor. The monitor receives the data and displays the demand in kilowatts of energy being consumed at any given time. The e2 OPT may be programmed for various rates, ensuring that the cost of your energy is accurate.



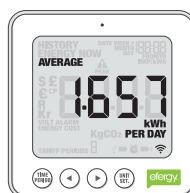
INSTANT SAVINGS

The e2 classic updates every 6, 12 or 18 seconds. The display then shows how much energy is consumed at that moment and how much it will cost if the 'energy now' load is maintained for a period of one day.



AVERAGE DATA

The e2 classic displays your average energy usage per day, week and month. See the impact of your energy efficient efforts, and then watch your average energy usage reduce.



DOWNLOAD YOUR DATA

Download your energy consumption data to your PC or Mac and analyse it with our efergy elink 2.0 software. View informative graphs, print or save reports as PDF files. Data may also be viewed using Excel.



MEMORY FUNCTION

The e2 classic memory function allows you to view your energy usage by the day, week or month. The e2 classic helps you understand your energy usage and how it changes over time.



TECHNICAL INFORMATION

Model Name	e2 IR
Model Number	E2-UK
Frequency	433.5MHz
Transmission Time	6, 12 or 18 Sec
Transmission Range	40 - 70m
Sensor Voltage Range	110 - 600V
Measuring Current	50mA - 90A
Accuracy	> 90%

The backlight will be activated from 18:00 to 6:00 hours

THE KIT CONTAINS

1 x e2 Wireless Energy Monitor	Batteries Supplied
1 x Transmitter	1 x USB cable
1 x Mini Optical Sensor	elink 2.0 software download from efergy.com



Our footprint

Branches in South Africa

Head Office:	Tel: +27 11 493 0344	Fax: +27 11 493 3027
Cape Town:	Tel: +27 21 532 8400	Fax: +27 21 531 0906
Port Elizabeth:	Tel: +27 41 484 2641	Fax: +27 41 484 2643
Polokwane:	Tel: +27 15 292 1096	Fax: +27 15 292 1027
Bloemfontein:	Tel: +27 51 403 5220	Fax: 086 504 4262
Pretoria:	Tel: +27 12 328 6327	Fax: 086 566 7746
Durban:	Tel: +27 31 303 3298	Fax: +27 31 303 1508
East London:	Tel: +27 43 742 1464	Fax: +27 43 742 1465
Nelspruit:	Tel: +27 13 755 3000	Fax: +27 13 755 3007
Upington:	Tel: +27 54 331 3949	Fax: +27 54 3313 944

Branches in Southern Africa

Botswana:	Tel: +267 390 8807	Fax: +267 390 8856
Namibia:	Tel: +264 612 48425	Fax: +264 612 48424

Agents in Southern Africa

Mozambique:	Tel: +258 21 406328
Zimbabwe:	Tel: +263 9 77280
Swaziland:	Tel: +268 255 04455 Fax: +268 255 04472
Zambia:	Tel: +260 211 287698